



## Belshaw OPEN KETTLE FRYERS ~ Choose what you need!

VIDEO: <https://vimeo.com/belshaw/openkettle>

Cake donut depositor:  
Type B (manual)  
or Type F (electric)

Submerger

Frying Screen

Drain tray

Screen handles

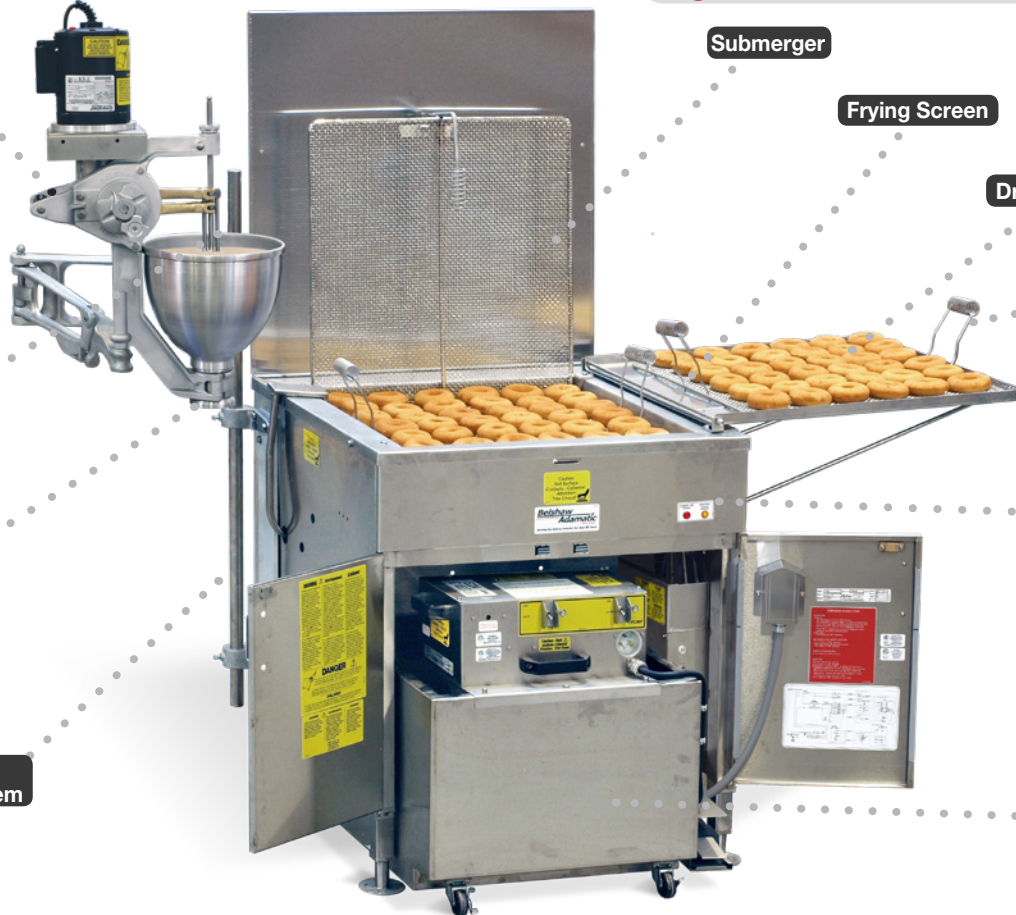
FRYER  
(724CG gas fryer)

EZMelt  
filtration system

Plunger

Cylinder

Column  
mounting system



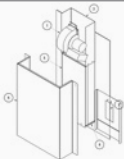
## Your Options...

### Fryers

Gas or electric  
fryers in 3 sizes:  
18" W x 26" D  
24" W x 24" D  
34" W x 24" D



Draft Inducer (recommended  
for fryers using propane or  
at altitudes over 3,000 ft.)



### Cake Donuts

Type B depositor  
(hand crank)



Wall mounting system  
(alternative to column mount)



Precision height adjuster  
(adjusts depositor height  
in seconds) alternative  
to standard lock collar



Plungers (Ball,  
Stick, Cruller, etc)



### Screens

Donut screen  
(20+ recommended  
for raised donuts)



Detachable screen handles  
(for use with proofing  
screens)



Screen cradle  
(alternative to handles)



**Customer Service** [sales@belshaw.com](mailto:sales@belshaw.com) 800-578-2547 **Tech Support** [service@belshaw.com](mailto:service@belshaw.com) **Product Info** [info@belshaw.com](mailto:info@belshaw.com)

an Ali Group Company

© 2019