

CP CABINET PROOFER

Accepts screens or pans from 17 x 25 inches to 24 x 24 inches

17 shelves @ 3 inch spacing (adjustable)

2 'Dutch' doors with see-through windows

DESCRIPTION

Belshaw's CP cabinet proofer is designed for quality, dependability and convenience, for proofing all baked goods.

The CP proofer is a robust mobile cabinet proofer that can be rolled into any convenient position for loading or unloading.

Two insulated 'Dutch' doors provide the best solution for efficient use while retaining warm air in the chamber.

STANDARD FEATURES

- 17 shelf brackets supplied.
- Shelf brackets can be placed on any of 34 shelf positions.
- Two 'Dutch' doors enable the operator to insert or remove screens, without opening a full-height door.
- Doors are sealed with insulating gaskets, and operate with high strength magnetic latches.
- Independently controlled heat and humidity.
- Rolls easily with 4 heavy duty casters (2 lockable)
- Self-contained electrical compartment, can be removed like a drawer for cleaning and maintenance.
- Water reservoir filled manually (Auto-water optional).
- Certified to NSF-4, UL-197 and CSA 22.2

OPTIONS

- 120 V or 208-240 V (all single phase).
- Autowater system (field installed accessory).

Easily accessible electrical compartment with heat/humidity controls and temperature display. ↓



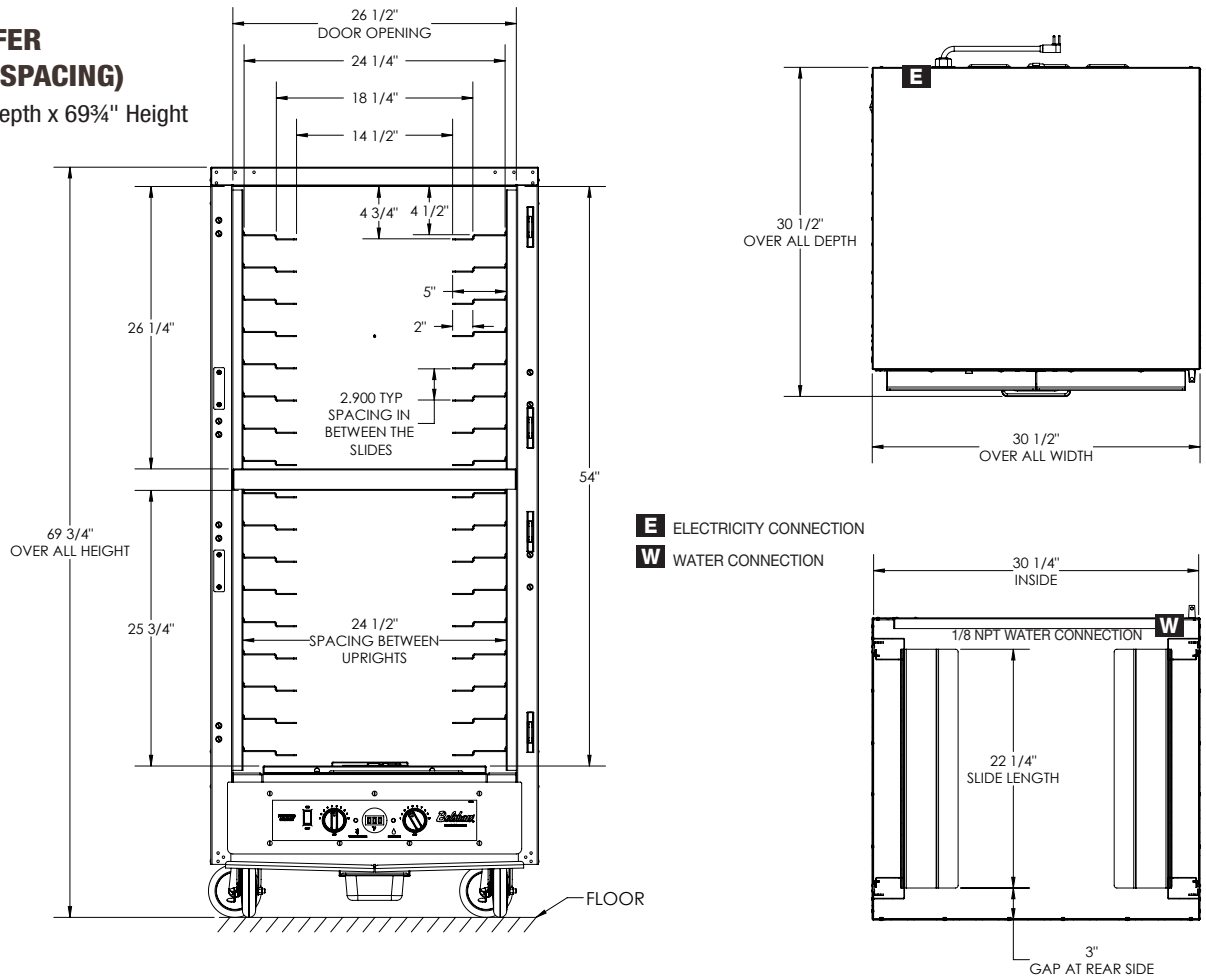
↑ Belshaw CP1/CP2 Cabinet Proofer



↑ Belshaw CP1/CP2 Cabinet Proofer (shown with donut firing screens)

**BELSHAW PROOFER
(WITH 3" SHELF SPACING)**

30½" Width x 30½" Depth x 69¾" Height



MODEL SELECTION

Model	Description	Supply Voltage	Amperage / Wattage
CP-1	Cabinet Proofer 120 V	120 V, 60 Hz, 1 ph	12 A, 1440 W
CP-2	Cabinet Proofer 208-240 V	208-240 V, 50/60 Hz, 1 ph	5.5-6.0 A, 1210-1440 W
CP-1001	Auto Water accessory 120 V	120 V, 60 Hz, 1 ph	
CP-1002	Auto Water accessory 208-240 V	208-240 V, 50/60 Hz, 1 ph	

NET DIMENSIONS AND SHIPPING DATA

Data is estimated, for North America shipments

Model	Dimensions	Weight	Class
NET	31" W x 31" D x 70" H		
SHIPPED	36" W x 50" D x 84" H	330 lbs	150

ELECTRICAL CONNECTORS

Supplied where compatible, otherwise connector is not supplied.



NEMA 5-15P (120 V/50/60/1)



NEMA 5-15P (208-240 V/50/60/1)