



# Belshaw OPEN KETTLE FRYERS ~ Choose what you need!

VIDEO: <https://vimeo.com/belshaw/openkettle>



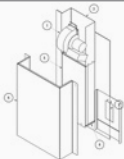
## Your Options...

### Fryers

Gas or electric fryers in 3 sizes:  
18" W x 26" D  
24" W x 24" D  
34" W x 24" D



Draft Inducer (recommended for fryers using propane or at altitudes over 3,000 ft.)



### Cake Donuts

Type B depositor (hand crank)



Wall mounting system (alternative to column mount)



Precision height adjuster (adjusts depositor height in seconds) alternative to standard lock collar



Plungers (Ball, Stick, Cruller, etc)



### Screens

Donut screen (20+ recommended for raised donuts)



Detachable screen handles (for use with proofing screens)



Screen cradle (alternative to handles)



**Customer Service** sales@belshaw.com 800-578-2547 **Tech Support** service@belshaw.com **Product Info** info@belshaw.com

an Ali Group Company

© 2019